



EQUITY IN UTC RESEARCH

November 12, 2021



Agenda

Purpose of this Workshop

Hear from Experts

Q&A

Building Equity into Proposals

2022 C2SMART Request for Proposals

Changing Expectations

How the USDOT and C2SMART have reframed our thinking, refocused resource allocation, and adjusted plans



Equity is the overarching priority for the USDOT.

“The USDOT is looking to **center voices of the underserved, figuring out where folks are overburdened and under-resourced** and trying to address those issues. We are **thinking of all transportation issues through a civil rights lens**, across the whole department: all our funding decisions, policies, and other implementations. We want to understand how transportation can **think about, measure, and assess equity**. Everything is fair game.”

USDOT's Focus on Equity

Implemented an Equity Leadership Team & Task Force

USDOT-wide teams overseeing the implementation of the Equity Executive Order

Developing an Agency Equity Plan *to shape* the USDOT Strategic Plan

A comprehensive approach to advancing racial equity across 6 areas: data and assessment, workforce equity, stakeholder engagement, mobility justice, technology and innovation, and budget

Studying how best to measure equity in transportation

Released an RFI that seeks ways to directly measure equity in transportation investments, policies and programs; systemic barriers to opportunities; affordability; reliability; and social cost of inequity

Justice40 Initiative

Aims to deliver 40% of overall benefits to disadvantaged communities, including development of a methodology to identify disadvantaged communities and benefits for Justice40-covered programs

2022 C2SMART Projects & Equity

How does the project directly address equity, or what equity performance measures can be included?



How does the project work towards addressing USDOT equity goals?



How can C2SMART increase its own diversity?



Questions for Today

Project Parameters & Processes

What are the performance metrics we can build into our projects?

How detailed SHOULD data be to measure inequity?

How should we engage with data related to new tech (ex EV, safety tech)?

Where do we get the data from?

What are data gaps in measuring equity?



Project Ideas

What equity research questions are UTC researchers best positioned to answer?

How was success measured; how were retention & promotion measured?

What are the educational pipelines to successfully diversify transportation workforces?



Panelists



Luis Artieda
World Enabled



David Bragdon
TransitCenter



Amy Fong

Department of Labor Office
of Disability Employment
Policy



Alice Grossman

Center for Advancing
Research in Transportation
Emissions, Energy, and
Health at TTI

Resources on Equity



Further reading, information, workshops and toolkits for advancing equity in transportation & beyond

USDOT Resources

[Justice40 Initiative](#)

[Transportation Equity at USDOT RFI](#)

[Opportunities for Research on Transportation and Equity](#)

[USDOT Volpe Center: Innovation for a Sustainable, Equitable Transportation System Series](#)

C2SMART Resources

[Student RFP Info Session](#)

[2022 RFP Submission](#)

Toolkits

[Advancing Workplace Equity](#)

[University of Kansas Community Toolbox](#)

Speaker Resources

[Eno report with the KPIs for WAV versus non-WAV service](#)

[Dr. Pineda's Pyramid of Equity](#)

[NYC accessibility campaign](#)

[Testimony to DOT](#) || [Advice to Transit Agencies](#)

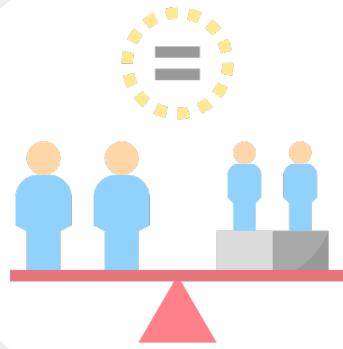
2022 RFP

A bigger, bolder C2SMART

C2SMART
CONNECTED CITIES WITH
SMART TRANSPORTATION 



C2SMART's 2022 Goals



Focus on Equity

Each proposal will, in some form, need to be prepared to discuss how the project will directly address equity concerns, or else include an equity performance measure of some kind.



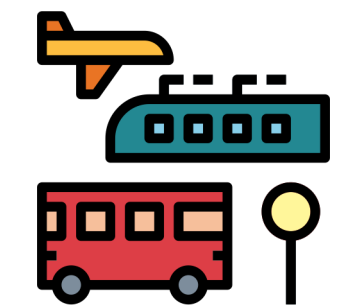
Diversify our partners and consortium

Collaboration between schools, disciplines, and external organizations



Nontraditional research activity

Support for training and workforce development for an upskilled, diverse transportation workforce. Specific funding for student-led projects and initiatives such as entrepreneurship



Grand Challenges in Transportation Research

This is an opportunity for C2SMART to affect not just our own research, but positively impact our industry partners *and directly train* the transportation workforce of tomorrow.

Track



1

Research-to-Implementation

Faculty-led applied research projects with implementations and partners

Track

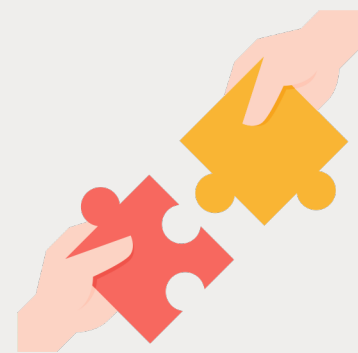


2

Nontraditional Research

Workshop series, workforce development, or equity-focused transportation workforce analyses

Track



3

Grand Challenges

What is the next leap in technology gained or needed as an end-product of multi-year research efforts?

Track



4

Student Initiatives

Flexible/agile funding for student-driven projects, entrepreneurship, and events

Track 1: Research-to-Implementation

Faculty-led applied research projects
with agency and/or industry partners

Engagement

Stakeholder collaboration
Stakeholder implementation
Corporate research support
Research outputs deployment

Dissemination

Dissemination of
research results
Tracking and reporting
Documenting outputs,
outcomes, and impacts

Industry

Commercialization
Licensing



field implementations



product releases



prototypes



pilot demonstrations

Collaborate with
external agency and
industry partners ...



... in order to ensure that
C2SMART projects have
direct application and
scaling opportunities.

Track 2: Nontraditional Projects

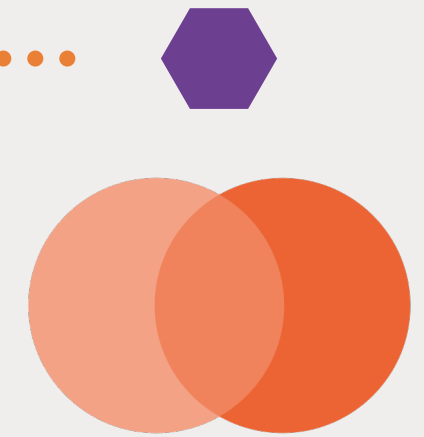
Funding for activity such as workshops series, workforce development training, or other projects otherwise outside of traditional research scopes



Target under-represented research areas



Offer more opportunities for students



Engage more deeply in intra-school cross-disciplinary collaboration

1) Research activity directly addressing Equity in Transportation

2) Student & workforce development activities

3) External community partner collaborative activities

Track 3: Broad Challenges and Leaps in Transportation Research

Beyond the bounds of current and past UTC research; identify big leaps and large challenges that research can undertake



What are the next major technological leaps in transportation needed? Are there opportunities to synthesize individual research efforts (across years or researchers/schools) to enhance overall impact of UTC research?



What was achieved over the course of multi-year research? What still remains to achieve a paradigm shift? What were the lessons learned? What are the costs and benefits?



Is there a mechanism, such as an online platform or multi-disciplinary learning sessions, to seek input from industry partners about challenges they face, and how UTC research led by transportation faculty can best be applied towards solving these issues?

Track 4: Student Initiatives

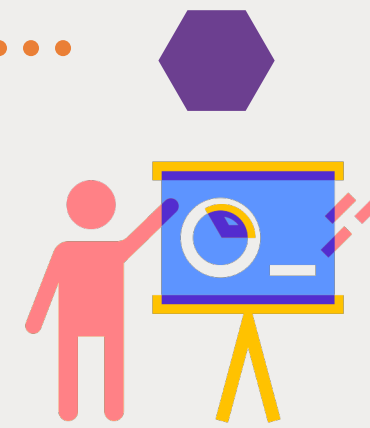
C2SMART will set aside funding exclusively for student activities



**Student-driven research:
project proposals directly
from students**

Small projects for new,
innovative research questions

Lead faculty will approve work
plan and provide mentorship



**Student
Entrepreneurship**

Seed funding for
innovations and tech
solutions in transportation
and urban mobility

Connect students to
mentors, potential
industry partners, and
institutional knowledge to
help get their ideas off the
ground and into the world



**Student Development
Events**

Hackathons, Workshops,
University-Industry events

Info session on Friday November 19th, 12pm ET

Submitting a Proposal

Deadlines

December 18, 2021: Deadline for full proposal responses submitted via the online system

Dec 2021 – Feb 2022: Peer review, follow-up, selection, and funding allocations

February 2022: Notice of award

March 1, 2022: All projects begin.

February 28, 2023: Last date for project completion.

Submission

Tracks 1-3

1. **Proposal Document**
2. **Proposal Budget**
3. **Data Management Plan**
(Track 1 and 3 only)

Track 4 (Students)

Students will answer their own, separate RFP on the C2SMART website.

Requirements

Compliance with USDOT Open Data / Public Access Policies

Deliverables including at minimum a final report

50% minimum non-federal match (Tracks 1-3)

Upcoming Student Events



Thursday, November 18th at 11am ET

What's the Chatter?
student speaker series

**CYCLE SPEAK:
CITI BIKE &
URBAN MOBILITY**

Join C2SMART and Laura Fox, General Manager at Lyft's CitiBike program, to discuss the role of shared mobility systems, from bikes to taxis, in driving the evolution of smart cities and urban mobility.

A photograph of several blue CitiBike bicycles parked in a station. The bikes are blue with white accents and have "citi bike" written on the frame. A white dock is visible in the foreground. The background shows a city street with trees and buildings.

Student RFP Info Session

Friday, November 19th at
12pm ET

via Zoom – register at
[C2SMART Website](https://www.c2smart.org/)

c2smart.engineering.nyu.edu